

High Resolution Methods for Time Dependent Problems with Piecewise Smooth Solutions

Eitan Tadmor*

Abstract

A trademark of nonlinear, time-dependent, convection-dominated problems is the spontaneous formation of non-smooth macro-scale features, like shock discontinuities and non-differentiable kinks, which pose a challenge for high-resolution computations. We overview recent developments of modern computational methods for the approximate solution of such problems. In these computations, one seeks piecewise smooth solutions which are realized by finite dimensional projections. Computational methods in this context can be classified into two main categories, of local and global methods. Local methods are expressed in terms of point-values (— Hamilton-Jacobi equations), cell averages (— nonlinear conservation laws), or higher localized moments. Global methods are expressed in terms of global basis functions.

High resolution central schemes will be discussed as a prototype example for local methods. The family of central schemes offers high-resolution “black-box-solvers” to an impressive range of such nonlinear problems. The main ingredients here are detection of spurious extreme values, non-oscillatory reconstruction in the directions of smoothness, numerical dissipation and quadrature rules. Adaptive spectral viscosity will be discussed as an example for high-resolution global methods. The main ingredients here are detection of edges in spectral data, separation of scales, adaptive reconstruction, and spectral viscosity.

2000 Mathematics Subject Classification: 65M06, 65M70, 65M12.

Keywords and Phrases: Piecewise smoothness, High resolution, Central schemes, Edge detection, Spectral viscosity.

1. Introduction — piecewise smoothness

*University of California Los-Angeles, Department of Mathematics, Los Angeles, CA, USA 90095, and University of Maryland, Department of Mathematics, Center for Scientific Computation and Mathematical Modeling (CSCAMM) and Institute for Physical Science & Technology (IPST), College Park, MD, USA 20742. E-mail: tadmor@math.umd.edu

A trademark of nonlinear time-dependent convection-dominated problems is the spontaneous formation of non-smooth macro-scale features which challenge high-resolution computations. A prototype example is the formation of shock discontinuities in nonlinear conservation laws,

$$\frac{\partial}{\partial t} u(x, t) + \nabla_x \cdot f(u(x, t)) = 0, \quad u := (u_1, \dots, u_m)^\top. \quad (1.1)$$

It is well known, e.g., [9], that solutions of (1.1) cease to be continuous, and (1.1) should be interpreted in a weak sense with the derivatives on the left as Radon measures. This requires clarification. If $u(x, t)$ and $v(x, t)$ are two admissible solutions of (1.1) then the following stability estimate is sought (here and below α, β, \dots stand for different generic constants),

$$\|u(\cdot, t) - v(\cdot, t)\| \leq \alpha_t \|u(\cdot, 0) - v(\cdot, 0)\|. \quad (1.2)$$

Such estimates with different norms, $\|\cdot\|$, are playing a key role in the linear setting — both in theory and computations. For linear hyperbolic systems, for example, (1.2) is responsible for the usual L^2 -stability theory, while the stability of parabolic systems is often measured by the L^∞ -norm, consult [14]. But for nonlinear conservation laws, (1.2) fails for any L^p -norm with $p > 1$. Indeed, comparing $u(x, t)$ with any fixed translation of it, $v(x, t) := u(x + h, t)$, the L^p version of (1.2) implies

$$\|\Delta_{+h} u(\cdot, t)\|_{L^p(\mathbf{R}^d)} \leq \alpha_t \|\Delta_{+h} u(\cdot, 0)\|_{L^p(\mathbf{R}^d)}, \quad \Delta_{+h} u(\cdot, t) := u(\cdot + h, t) - u(\cdot, t).$$

For smooth initial data, however, the bound on the right yields $\|\Delta_{+h} u(\cdot, t)\|_{L^p} \leq \alpha_t |h|$, which in turn, for $p > 1$, would lead to the contradiction that $u(\cdot, t)$ must remain continuous. Therefore, conservation laws cannot satisfy the L^p -stability estimate (1.2) after their finite breakdown time, except for the case $p = 1$. The latter leads to Bounded Variation (BV) solutions, $\|u(\cdot, t)\|_{BV} := \sup \|\Delta_{+h} u(\cdot, t)\|_{L^1} / |h| \leq \alpha_t < \infty$, whose derivatives are interpreted as the Radon measures mentioned above. BV serves as the standard regularity space for admissible solutions of (1.1). A complete BV theory for scalar conservation laws, $m = 1$, was developed Kružkov. Fundamental results on BV solutions of one-dimensional systems, $d = 1$, were obtained by P. Lax, J. Glimm, and others. Consult [2] for recent developments. Relatively little is known for general $(m - 1) \times (d - 1) > 0$, but cf., [12].

We argue that the space of BV functions is still too large to describe the approximate solutions of (1.1) encountered in computations. Indeed, in such computations one does not 'faithfully' realize arbitrary BV functions but rather, piecewise smooth solutions. We demonstrate this point in the context of scalar approximate solutions, $v^h(x, t)$, depending on a small computational scale $h \sim 1/N$. A typical error estimate for such approximations reads, [4]

$$\|v^h(\cdot, t) - u(\cdot, t)\|_{L^1_{loc}(\mathbf{R})} \leq \|v^h(\cdot, 0) - u(\cdot, 0)\|_{L^1_{loc}(\mathbf{R})} + \alpha_t h^{1/2}. \quad (1.3)$$

The convergence rate of order $1/2$ is a well understood linear phenomena, which is observed in computations¹. The situation in the nonlinear case is different. The

¹Bernstein polynomials, $B_N(u)$, provide a classical example of first-order monotone approximation with L^1 -error of order $(\|u\|_{BV}/N)^{1/2}$. The general linear setting is similar, with improved rate $\sim h^{r/(r+1)}$ for r -order schemes.

optimal convergence rate for arbitrary BV initial data is still of order one-half, [15], but actual computations exhibit higher-order convergence rate. The apparent difference between theory and computations is resolved once we take into account piecewise smoothness. We can quantify piecewise smoothness in the simple scalar convex case, where the number of shock discontinuities of $u(\cdot, t)$ is bounded by the finitely many inflection points of the initial data, $u(x, 0)$. In this case, the singular support of $u(\cdot, t)$ consists of finitely many points where $\mathcal{S}(t) = \{x \mid \partial_x u(x, t) \downarrow -\infty\}$. Moreover, the solution in between those point discontinuities is as smooth as the initial data permit, [21], namely

$$\sup_{x \in \mathcal{S}_L(t)} |\partial_x^p u(x, t)| \leq e^{pLT} \sup_{x \in \mathcal{S}_L(0)} |\partial_x^p u(x, 0)| + \text{Const}_L, \quad \mathcal{S}_L(t) := \{x \mid \partial_x u(x, t) \geq -L\}.$$

If we let $d(x, t) := \text{dist}(x, \mathcal{S}(t))$ denote the distance to $\mathcal{S}(t)$, then according to [19], the following pointwise error estimate holds, $|v^h(x, t) - u(x, t)| \leq \alpha_t h / d(x, t)$, and integration yields the first-order convergence rate

$$\|v^h(\cdot, t) - u(\cdot, t)\|_{L^1_{loc}(\mathbf{R})} \leq \alpha_t h |\log(h)|. \quad (1.4)$$

There is no contradiction between the optimality of (1.3) and (1.4). The former applies to arbitrary BV data, while the latter is restricted to piecewise smooth data and it is the one encountered in actual computations. The general situation is of course, more complicated, with a host of macro-scale features which separate between regions of smoothness. Retaining the invariant properties of piecewise smoothness in general problems is a considerable challenge for high-resolution methods.

2. A sense of direction

A computed approximation is a finite dimensional realization of an underlying solution which, as we argue above, is viewed as a piecewise smooth solution. To achieve higher accuracy, one should extract more information from the smooth parts of the solution. Macro-scale features of non-smoothness like shock discontinuities, are identified here as barriers for propagation of smoothness, and stencils which discretize (1.1) while crossing discontinuities are excluded because of spurious Gibbs' oscillations. A high resolution scheme should sense the direction of smoothness.

Another sense of directions is dictated by the propagation of information governed by convective equations. Discretizations of such equations fall into one of two, possibly overlapping categories. One category of so-called upwind schemes consists of stencils which are fully aligned with the local direction of propagating waves. Another category of so-called central schemes consists of two-sided stencils, tracing both right-going and left-going waves. A third possibility of stencils which discretize (1.1) 'against the wind' is excluded because of their inherent instability, [14]. A stable scheme should sense the direction of propagation.

At this stage, high resolution stable schemes should compromise between two different sets of directions, where propagation and smoothness might disagree. This requires essentially nonlinear schemes, with stencils which adapt their sense of direction according to the computed data. We shall elaborate the details in the context of high-resolution central scheme.

3. Central schemes

We start with a quotation from [14, §12.15], stating “In 1959, Godunov described an ingenious method for one-dimensional problems with shocks”. Godunov scheme is in the crossroads between the three major types of local discretizations, namely, finite-difference, finite-volume and finite-element methods. The ingenuity of Godunov’s approach, in our view, lies with the evolution of a globally defined approximate solution, $v^h(x, t^n)$, replacing the prevailing approach at that time of an approximate solution which is realized by its discrete gridvalues, $v_\nu(t^n)$. This enables us to pre-process, to evolve and to post-process a globally defined approximation, $v^h(x, t^n)$. The main issue is how to ‘manipulate’ such piecewise smooth approximations while preserving the desired non-oscillatory invariants.

Godunov scheme was originally formulated in the context of nonlinear conservation laws, where an approximate solution is realized in terms of a first-order accurate, piecewise-constant approximation

$$v^h(x, t^n) := \mathcal{A}_h v(x, t^n) := \sum_{\nu} \bar{v}_{\nu}(t^n) 1_{I_{\nu}}(x), \quad \bar{v}_{\nu}(t^n) := \frac{1}{|I_{\nu}|} \int_{I_{\nu}} v(y, t^n) dy.$$

The cell averages, \bar{v}_{ν} , are evaluated over the equi-spaced cells, $I_{\nu} := \{x \mid |x - x_{\nu}| \leq h/2\}$ of uniform width $h \equiv \Delta x$. More accurate Godunov-type schemes were devised using higher-order piecewise-polynomial projections. In the case of one-dimensional equi-spaced grid, such projections take the form

$$\mathcal{P}_h v(x) = \sum_{\nu} p_{\nu}(x) 1_{I_{\nu}}(x), \quad p_{\nu}(x) = v_{\nu} + v'_{\nu} \left(\frac{x - x_{\nu}}{h} \right) + \frac{1}{2} v''_{\nu} \left(\frac{x - x_{\nu}}{h} \right)^2 + \dots$$

Here, one pre-process the first-order cell averages in order to reconstruct accurate pointvalues, v_{ν} , and say, couple of numerical derivatives $v'_{\nu}/h, v''_{\nu}/h^2$, while the original cell averages, $\{\bar{v}_{\nu}\}$, should be preserved, $\mathcal{A}_h \mathcal{P}_h v^h = \mathcal{A}_h v^h$. The main issue is extracting information in the direction of smoothness. For a prototype example, let $\Delta_+ \bar{v}_{\nu}$ and $\Delta_- \bar{v}_{\nu}$ denote the usual forward and backward differences, $\Delta_{\pm} v_{\nu} := \pm(\bar{v}_{\nu \pm 1} - \bar{v}_{\nu})$. Starting with the given cell averages, $\{\bar{v}_{\nu}\}$, we set $v_{\nu} = \bar{v}_{\nu}$, and compute

$$v'_{\nu} = mm(\Delta_+ \bar{v}_{\nu}, \Delta_- \bar{v}_{\nu}), \quad mm(z_1, z_2) := \frac{sgn(z_1) + sgn(z_2)}{2} \min\{|z_1|, |z_2|\}. \quad (3.1)$$

The resulting piecewise-linear approximation is a second-order accurate, Total Variation Diminishing (TVD) projection, $\|\mathcal{P}_h v^h(x)\|_{BV} \leq \|v^h(x)\|_{BV}$. This recipe of so-called minmod numerical derivative, (3.1), is a representative for a large library of non-oscillatory, high-resolution limiters. Such limiters dictate discrete stencils in the direction of smoothness and hence, are inherently nonlinear. Similarly, nonlinear adaptive stencils are used in conjunction with higher-order methods. A description of the pioneering contributions in this direction by Boris & Book, A. Harten, B. van-Leer and P. Roe can be found in [10]. The advantage of dealing with globally defined approximations is the ability to pre-process, to post-process and in particular, to evolve such approximations. Let $u(x, t) = u^h(x, t)$ be the exact solution of (1.1) subject to $u^h(x, t^n) = \mathcal{P}_h v^h(x, t^n)$. The exact solution lies of course outside the finite computational space, but it could be realized in terms of its exact

cell averages, $v^h(x, t^{n+1}) = \sum_{\nu} \bar{v}_{\nu}(t^{n+1}) 1_{I_{\nu}}(x)$. Averaging is viewed here a simple post-processing. Two prototype examples are in order.

Integration of (1.1) over control volume $I_{\nu} \times [t^n, t^{n+1}]$, forms a local stencil which balances between the new averages, $\{\bar{v}_{\nu}(t^{n+1})\}$, the old ones, $\{\bar{v}_{\nu+k}(t^n)\}$, and the fluxes across the interfaces along $x_{\nu \pm 1/2} \times [t^n, t^{n+1}]$. In this case, the solution along these discontinuous interfaces is resolved in terms of Riemann solvers. Since one employs here an exact evolution, the resulting Godunov-type schemes are upwind scheme. The original Godunov scheme based on piecewise constant projection is the forerunner of all upwind schemes. As an alternative approach, one can realize the solution $u(x, t^{n+1})$, in terms of its exact staggered averages, $\{\bar{v}_{\nu+1/2}(t^{n+1})\}$. Integration of (1.1) over the control volume $I_{\nu+1/2} \times [t^n, t^{n+1}]$ subject to piecewise quadratic data given at $t = t^n$, $u(x, t^n) = \mathcal{P}_h v^h(x, t^n)$, yields

$$\begin{aligned} \bar{v}_{\nu+1/2}(t^{n+1}) &= \frac{1}{2} \left(\bar{v}_{\nu}(t^n) + \bar{v}_{\nu+1}(t^n) \right) + \\ &+ \frac{1}{8} \left(v'_{\nu}(t^n) - v'_{\nu+1}(t^n) \right) + \frac{\Delta t}{\Delta x} \left(F_{\nu+1}^{n+1/2} - F_{\nu}^{n+1/2} \right), \end{aligned} \quad (3.2)$$

where $F_{\nu}^{n+1/2}$ stands for the averaged flux, $F_{\nu}^{n+1/2} = \int_{t^n}^{t^{n+1}} f(u(x_{\nu}, \tau)) d\tau / \Delta t$. Thanks to the staggering of the grids, one encounters smooth interfaces $x_{\nu} \times [t^n, t^{n+1}]$, and the intricate (approximate) Riemann solvers are replaced by simpler quadrature rules. For second-order accuracy, for example, we augment (3.2) with the mid-point quadrature

$$F_{\nu}^{n+1/2} = f(v_{\nu}(t^{n+1/2})), \quad v_{\nu}(t^{n+1/2}) = v_{\nu}(t^n) - \frac{\Delta t}{2\Delta x} f(v_{\nu}(t^n))'. \quad (3.3)$$

Here, the prime on the right is understood in the usual sense of numerical differentiation of a gridfunction – in this case the flux $\{f(v_{\nu}(t^n))\}_{\nu}$. The resulting second-order central scheme (3.3), (3.2) was introduced in [13]. It amounts to a simple predictor-corrector, non-oscillatory high-resolution Godunov-type scheme. For systems, one implements numerical differentiation for each component separately. Discontinuous edges are detected wherever cell-averages form new extreme values, so that $v'_{\nu}(t^n)$ and $f(v_{\nu}(t^n))'$ vanish, and (3.3), (3.2) is reduced to the forerunner of all central schemes – the celebrated first-order Lax-Friedrichs scheme, [10]. This first-order stencil is localized to the neighborhood of discontinuities, and by assumption, there are finitely many them. In between those discontinuities, differentiation in the direction of smoothness restores second-order accuracy. This retains the overall high-resolution of the scheme. Consult Figure 1 for example.

Similarly, higher-order quadrature rules can be used in connection with higher-order projections, [3], [11]. A third-order simulation is presented in Figure 2. Finite-volume and finite-element extensions in several space dimensions are realized over general, possibly unstructured control volumes, $\Omega_{\nu} \times [t^n, t^{n+1}]$, which are adapted to handle general geometries. Central schemes for 2D Cartesian grids were introduced in [6], and extended to unstructured grids in [1]. A similar framework based on triangulated grids for high-resolution central approximations of Hamilton-Jacobi equations was described in [4] and the references therein.

Central schemes enjoy the advantage of simplicity – they are free of (approximate) Riemann solvers, they do not require dimensional splitting, and they apply

to arbitrary flux functions² without specific references to eigen-decompositions, Jacobians etc. In this context, central schemes offer a “black-box solvers” for an impressive variety of convection-dominated problems. At the same time, the central framework maintain high-resolution by pre -and post-processing in the direction of smoothness. References to diverse applications such as simulations of semiconductor models, relaxation problems, geometrical optics and multiphase computations, incompressible flows, polydisperse suspensions, granular avalanches MHD equations and more can be found at [16].

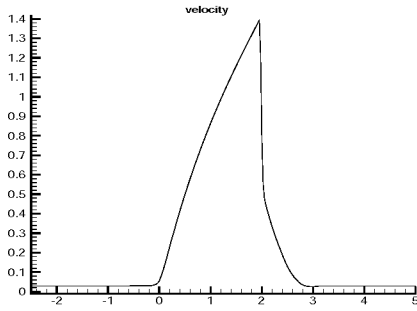


Figure 1: Second-order central scheme simulation of semiconductor device governed by 1D Euler-Poisson equations. Electron velocity in 10^7 cm/s with $N = 400$ cells.

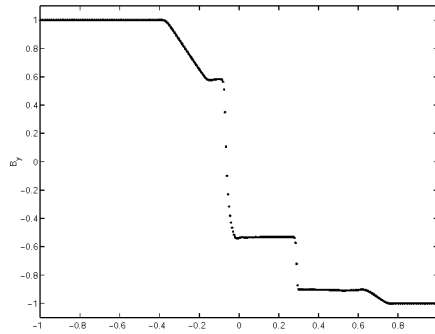


Figure 2: Third-order central scheme simulation of 1D MHD Riemann problem. with $N = 400$ cells. The y -magnetic field at $t = 0.2$.

The numerical viscosity present in central schemes is of order $\mathcal{O}(\frac{(\Delta x)^{2r}}{\Delta t})$. It is suitable for the convective regime where $\Delta t \sim \Delta x$, but it is excessive when a small time step is enforced, e.g., due to the presence of diffusion terms. To overcome this difficulty, a new family of central schemes was introduced in [7] and was further refined in [8]. Here, the previous staggered control volumes, $I_{\nu+1/2} \times [t^n, t^{n+1}]$, is replaced by the smaller — and hence less dissipative, $J_{\nu+1/2} \times [t^n, t^{n+1}]$, where $J_{\nu+1/2} := x_{\nu+1/2} + \Delta t \times [a^-, a^+]$ encloses the maximal cone of propagation, $a^\pm \equiv a_{\nu+1/2}^\pm = (\max_{\min})_k \lambda_k^\pm(f_u)$. The fact that the staggered grids are $\mathcal{O}(\Delta t)$ away from each other, yields central stencils with numerical viscosity of order $\mathcal{O}(\Delta x^{2r-1})$. Being independent of Δt enables us to pass to the limit $\Delta t \downarrow 0$. The resulting semi-discrete high-resolution central scheme reads $\hat{v}_\nu(t) = -(f_{\nu+1/2}(t) - f_{\nu-1/2}(t))/\Delta x$, with a numerical flux, $f_{\nu+1/2}$, expressed in terms of the reconstructed pointvalues, $v^\pm \equiv v_{\nu+1/2}^\pm = \mathcal{P}_h v^h(x_{\nu+1/2} \pm, t)$,

$$f_{\nu+1/2}(t) := \frac{a^+ f(v^-) - a^- f(v^+)}{a^+ - a^-} + a^+ a^- \frac{v^+ - v^-}{a^+ - a^-}. \quad (3.4)$$

²An instructive example is provided by gasdynamics equations with tabulated equations of state.

Instructive examples are provided in Figures 3, 4.

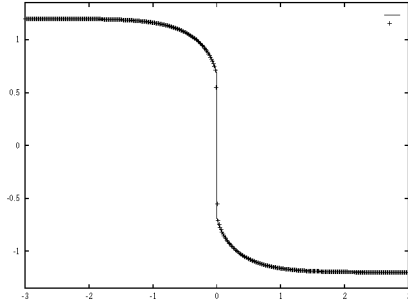


Figure 3: Convection-diffusion eq. $u_t + (u^2)_x/2 = (u_x/\sqrt{1+u_x^2})_x$ simulated by (3.4),(3.1), with 400 cells.

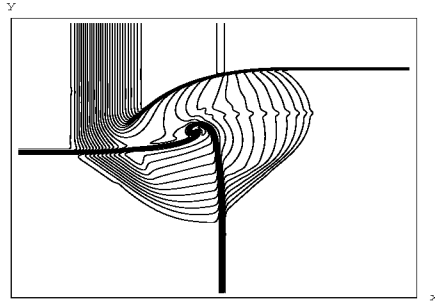


Figure 4: Third-order central scheme for 2D Riemann problem. Density contour lines with 400×400 cells.

4. Adaptive spectral viscosity methods

Godunov-type methods are based on zeroth-order moments of (1.1). In each time step, one evolves one piece of information per spatial cell — the cell average. Higher accuracy is restored by numerical differentiation in the direction of smoothness. An alternative approach is to compute higher-order moments, where the cell averages, \bar{v}_ν , and say, couple of numerical derivatives, v_ν', v_ν'' are evolved in time. Prototype examples include discontinuous Galerkin and streamline-diffusion methods, where several local moments per computational cell are evolved in time, consult [4] and the references therein. As the number of projected moments increase, so does the size of the computational stencil. At the limit, one arrives at spectral methods based on global projections,

$$v_N(x, t) = \mathcal{P}_N v(x, t) := \sum_{|k| \leq N} \hat{v}_k(t) \phi_k(x), \quad \hat{v}_k := \langle v(\cdot, t), \phi_k(\cdot) \rangle.$$

Here, $\phi_k(x)$ are global basis functions, $\phi_k = e^{ikx}, T_k(x), \dots$ and \hat{v}_k are the moments induced by the appropriately weighted, possibly discrete inner-product $\langle \cdot, \cdot \rangle$. Such global projections enjoy superior resolution — the error $\|v(\cdot) - \mathcal{P}_N v(\cdot)\|$ decays as fast as the global smoothness of $v(\cdot)$ permits. With piecewise smooth solutions, however, we encounter first-order spurious Gibbs' oscillations throughout the computational domain. As before, we should be able to pre- and post-process piecewise smooth projections, recovering their high accuracy in the direction of smoothness. To this end, local limiters are replaced by global concentration kernels of the form, [5], $K_N^\eta v_N(x) = \frac{\pi \omega(x)}{N} \sum_{|k| \leq N} \eta\left(\frac{|k|}{N}\right) \hat{v}_k(\phi_k(x))_x$, where $\eta(\cdot)$ is an arbitrary unit mass $C^\infty[0, 1]$ function at our disposal. Detection of edges is facilitated by separation between the $\mathcal{O}(1)$ scale in the neighborhoods of edges and $\mathcal{O}(h^r)$ scales in regions of smoothness, $K_N v_N(x) \sim [v(x)] + \mathcal{O}(Nd(x))^{-r}$. Here, $[v(x)]$ denotes the amplitude of the jump discontinuity at x (– with vanishing amplitudes signaling smoothness), and $d(x)$ is the distance to the singular support

of $v(\cdot)$. Two prototype examples in the 2π -periodic setup are in order. With $\eta(\xi) \equiv 1$ one recovers a first-order concentration kernel due to Fejer. In [5] we introduced the concentration kernel, $\eta^{exp}(\xi) \sim \exp\{\beta/\xi(1-\xi)\}$, with exponentially fast decay into regions of smoothness. Performing the minmod limitation, (3.1), $mm\{K_N^1 v_N(x), K_N^{exp} v_N(x)\}$, yields an adaptive, essentially non-oscillatory edge detector with enhanced separation of scales near jump discontinuities. Once macro-scale features of non-smoothness were located, we turn to reconstruct the information in the direction of smoothness. This could be carried out either in the physical space using adaptive mollifiers, $\Psi_{\theta,p}$, or by nonlinear adaptive filters, σ_p . In the 2π periodic case, for example, we set $\Psi * \mathcal{P}_N v(x) := \langle \Psi_{\theta,p}(x - \cdot), \mathcal{P}_N v(\cdot) \rangle$ where Ψ is expressed in terms of the Dirichlet kernel, $D_p(y) := \frac{\sin((p+1/2)\pi y)}{2\sin(\pi y/2)}$,

$$\Psi_{\theta,p}(y) = \frac{1}{\theta} \rho\left(\frac{y}{\theta}\right) D_p\left(\frac{y}{\theta}\right), \quad \rho \equiv \rho_\beta(y) := e^{\beta y^2/(y^2-1)} 1_{[-1,1]}(y). \quad (4.1)$$

Mollifiers encountered in applications maintain their finite accuracy by localization, letting $\theta \downarrow 0$. Here, however, we seek superior accuracy by the process of cancellation with increasing $p \uparrow$. To guarantee that the reconstruction is supported in the direction of smoothness, we maximize θ in terms of the distance function, $\theta(x) = d(x)$, so that we avoid crossing discontinuous barriers. Superior accuracy is achieved by the adaptive choice $p \sim d(x)N$, which yields, [20],

$$|\Psi_{\{d(x), d(x)N\}} * \mathcal{P}_N v(x) - v(x)| \leq \text{Const.} (d(x)N)^r e^{-\gamma \sqrt{d(x)N}}.$$

The remarkable exponential recovery is due to the Gevrey regularity of $\rho_\beta \in \mathcal{G}_2$ and Figure 5 demonstrates such adaptive recovery with exponential convergence rate recorded in Figure 6. An analogous filtering procedure can be carried out in the dual Fourier space, and as before, it hinges on a filter with an adaptive degree p

$$\Psi * \mathcal{P}_N v(x) := \sum_{|k| \leq N} \sigma_p\left(\frac{|k|}{N}\right) \hat{v}_k e^{ikx}, \quad \sigma_p(\xi) = e^{\beta \xi^p / (\xi^2 - 1)}, \quad p \sim (d(x)N)^{r/r+1}.$$

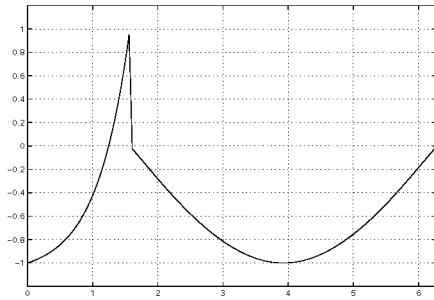


Figure 5: Adaptive reconstruction of the piecewise smooth data from its using $N = 128$ -modes using (4.1).

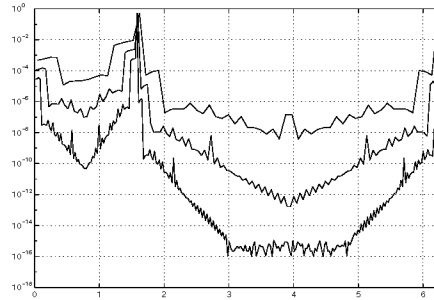


Figure 6: Log error for an adaptive spectral mollifier based on $N = 32, 64$, and 128 modes.

Equipped with this toolkit to process spectral projections of piecewise smooth data, we turn to consider their time evolution. Godunov-type methods are based evolution of cell averages. Cell averaging is dissipative, but projections onto higher-order moments are not. The following example, taken from [18] shows what go wrong with global projections. We consider the Fourier method for 2π -periodic inviscid Burgers' equation, $\partial_t v_N(x, t) + \partial_x S_N(v_N^2(\cdot, t))/2 = 0$. Orthogonality implies that $\|v_N(\cdot, t)\|_{L^2}^2$ is conserved in time, and in particular, that the Fourier method admits a weak limit, $v_N(\cdot, t) \rightharpoonup \bar{v}(t)$. At the same time, $\bar{v}(t)$ is not a strong limit, for otherwise it will contradict the strict entropy dissipation associated with shock discontinuities. Lack of strong convergence indicates the persistence of spurious dispersive oscillations, which is due to lack of entropy dissipation. With this in mind, we turn to discuss the Spectral Viscosity (SV) method, as a framework to stabilize the evolution of global projections without sacrificing their spectral accuracy. To this end one augments the usual Galerkin procedure with high frequency viscosity regularization

$$\frac{\partial}{\partial t} v_N(x, t) + \mathcal{P}_N \nabla_x \cdot f(v_N(\cdot, t)) = -N \sum_{|k| \leq N} \sigma\left(\frac{|k|}{N}\right) \hat{v}_k(t) \phi_k(x), \quad (4.2)$$

where $\sigma(\cdot)$ is a low-pass filter satisfying $\sigma(\xi) \geq (|\xi|^{2s} - \frac{\beta}{N})^+$. Observe that the SV is only activated on the highest portion of the spectrum, with wavenumbers $|k| > \gamma N^{(2s-1)/2s}$. Thus, the SV method can be viewed as a compromise between the stable viscosity approximations corresponding to $s = 0$ but restricted to first order, and the spectrally accurate yet unstable spectral method corresponding to $s = \infty$.

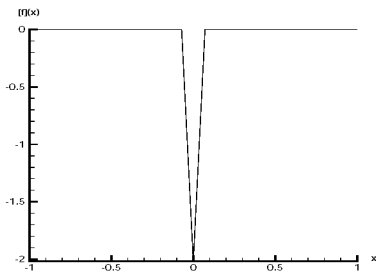


Figure 7: Enhanced detection of edges with $v(x)$ given by $v(x) = -\operatorname{sgn} x \cdot \cos(x + x \cdot \operatorname{sgn} x/2) 1_{[-\pi, \pi]}(x)$.

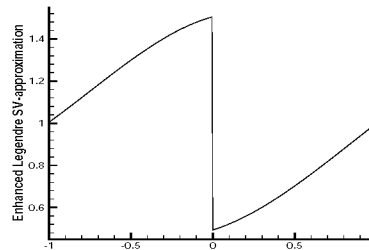


Figure 8: Legendre SV solution of inviscid Burgers' equation. Reconstruction in the direction smoothness.

The additional SV on the right of (4.2) is small enough to retain the formal spectral accuracy of the underlying spectral approximation. At the same time, SV is large enough to enforce a sufficient amount of entropy dissipation and hence, to prevent the unstable spurious Gibbs' oscillations. The original approach was introduced in [18] in conjunction with second-degree dissipation, $s = 1$. Extensions to several

space variables, non-periodic expansions, further developments of hyper SV methods with $0 < s < \infty$, and various applications can be found in [17]. We conclude with an implementation of adaptive SV method for simple inviscid Burgers' in Figure 8.

References

- [1] P. Arminjon & M.-C. Viallon, Convergence of a finite volume extension of the Nessyahu-Tadmor scheme on unstructured grids for a two-dimensional linear hyperbolic equations, *SIAM J. Numer. Anal.* 36 (1999) 738–771.
- [2] S. Bianchini & A. Bressan, Vanishing viscosity solutions to nonlinear hyperbolic systems, Preprint S.I.S.S.A., Trieste 2001.
- [3] F. Bianco, G. Puppo & G. Russo, High order central schemes for hyperbolic systems of conservation laws, *SIAM J. Sci. Comput.* 21 (1999) 294–322.
- [4] B. Cockburn, C. Johnson, C.-W. Shu & E. Tadmor, *Advanced Numerical Approximation of Nonlinear Hyperbolic Equations*, (A. Quarteroni, ed.), Lecture Notes in Mathematics 1697, Springer 1998.
- [5] A. Gelb & E. Tadmor, Detection of edges in spectral data II. Nonlinear enhancement, *SIAM J. Numer. Anal.*, 38 (2000), 1389–1408.
- [6] G.-S. Jiang & E. Tadmor, Non-oscillatory central schemes for multidimensional hyperbolic conservation laws *SIAM J. Sci. Comput.*, 19 (1998) 1892–1917.
- [7] A. Kurganov & E. Tadmor, New high-resolution central schemes for nonlinear conservation laws and convection-diffusion equations, *J. Comp. Phys.*, 160 (2000), 214–282.
- [8] A. Kurganov, S. Noelle & G. Petrova, Semi-discrete central-upwind scheme for hyperbolic conservation laws and Hamilton-Jacobi equations, *SIAM J. Sci. Comput.* 23 (2001), 707–740.
- [9] P. D. Lax, *Hyperbolic Systems of Conservation Laws and the mathematical Theory of Shock Waves*, SIAM, 1973.
- [10] R. LeVeque, *Numerical Methods for Conservation Laws*, Lecture Notes in Mathematics, Birkhauser, 1992.
- [11] D. Levy, G. Puppo & G. Russo, Central WENO schemes for hyperbolic systems of conservation laws *Math. Model. Numer. Anal.* 33 (1999) 547–571.
- [12] A. Majda, *Compressible Fluid Flow and Systems of Conservation Laws in Several Space Variables*, Springer, 1984.
- [13] H. Nessyahu & E. Tadmor, Non-oscillatory central differencing for hyperbolic conservation laws, *J. Comp. Phys.*, 87 (1990), 408–463.
- [14] R. Richtmyer & K. W. Morton, *Difference Methods for Initial-Value Problems*, Interscience, John Wiley, 1967.
- [15] F. Şabac, The optimal convergence rate of monotone finite difference methods for hyperbolic conservation laws, *SIAM J. Numer. Anal.*, 34 (1997), 2306–2318.
- [16] E. Tadmor, <http://www.math.ucla.edu/~tadmor/centralstation/>
- [17] E. Tadmor, http://www.math.ucla.edu/~tadmor/spectral_viscosity/
- [18] E. Tadmor, Convergence of spectral methods for nonlinear conservation laws, *SIAM J. Numer. Anal.*, 26 (1989), 30–44.
- [19] E. Tadmor & T. Tang, Pointwise error estimates for scalar conservation laws

- with piecewise smooth solutions, *SIAM J. Numer. Anal.*, 36 (1999), 1739–1758.
- [20] E. Tadmor & J. Tanner, Adaptive mollifiers – high resolution recovery of piecewise smooth data from its spectral information, *Found. Comput. Math.*, 2 (2002) 155–189.
- [21] E. Tadmor & T. Tassa, On the piecewise regularity of entropy solutions to scalar conservation laws, *Comm. PDEs*, 18 (1993), 1631–1652.

