

# Analysis and Numerical Approximation of PDEs

September 08-10, 2014

ETH Zurich

## Conference Announcement



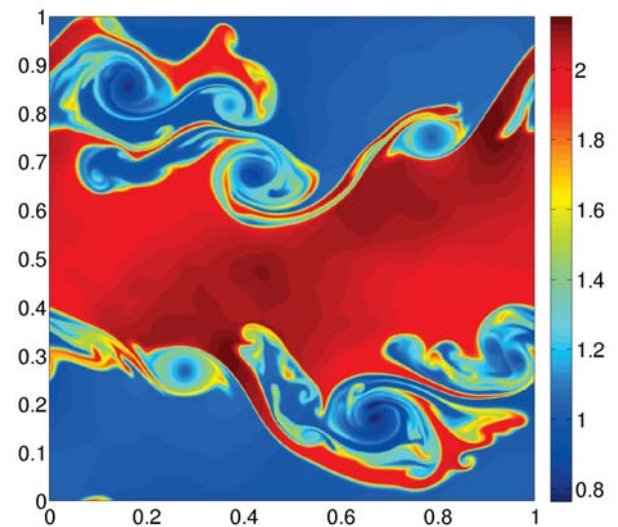
### Invited Speakers

<b>R. Caflisch</b>	<b>UCLA</b>
<b>W. Dahmen</b>	<b>RWTH, Aachen</b>
<b>C. De Lellis</b>	<b>Zurich</b>
<b>U. S. Fjordholm</b>	<b>Trondheim</b>
<b>H. Holden</b>	<b>Trondheim</b>
<b>A. Kiselev</b>	<b>Rice</b>
<b>D. Kroener</b>	<b>Freiburg</b>
<b>A. Kurganov</b>	<b>Tulane</b>
<b>P. LeFloch</b>	<b>Paris VI</b>
<b>Y. Maday</b>	<b>Paris VI</b>
<b>S. Mallat</b>	<b>Ecole Polytechnique</b>
<b>P. Marcati</b>	<b>L' Aquila</b>
<b>P. Markowich</b>	<b>KAUST</b>
<b>B. Popov</b>	<b>Texas A&amp;M</b>
<b>G. Russo</b>	<b>Catania</b>
<b>J. Tanner</b>	<b>Oxford</b>
<b>M. Vogelius</b>	<b>Rutgers</b>

### Organizer

**Siddhartha Mishra** SAM, ETH Zurich

### Conference Theme



This conference will cover latest developments in the analysis and numerical approximation of nonlinear PDEs. The conference will honor Prof. Eitan Tadmor on his 60th birthday. All talks will be given by invited plenary speakers. There will be a poster session for interested participants.

### Venue

ETH Zurich Main Building G-Floor, HG G5

### Registration

Online at  
<http://www.sam.math.ethz.ch/woanapde/registration.php>

### Contact

<http://www.sam.math.ethz.ch/woanapde/contact.php>  
[woanapde@math.ethz.ch](mailto:woanapde@math.ethz.ch)

### Deadlines

Registration open	Jan 20, 2014
Submission of Poster Abstracts	Jul 24, 2014
Notification of Acceptance of Posters	Aug 01, 2014
Deadline Registration	Aug 08, 2014

### Sponsors

**FIM**  
Forschungsinstitut für Mathematik

**erc**  
European Research Council  
Established by the European Commission

Seminar for  
Applied  
Mathematics **SAM**

**ETH**  
Eidgenössische Technische Hochschule Zürich  
Swiss Federal Institute of Technology Zurich